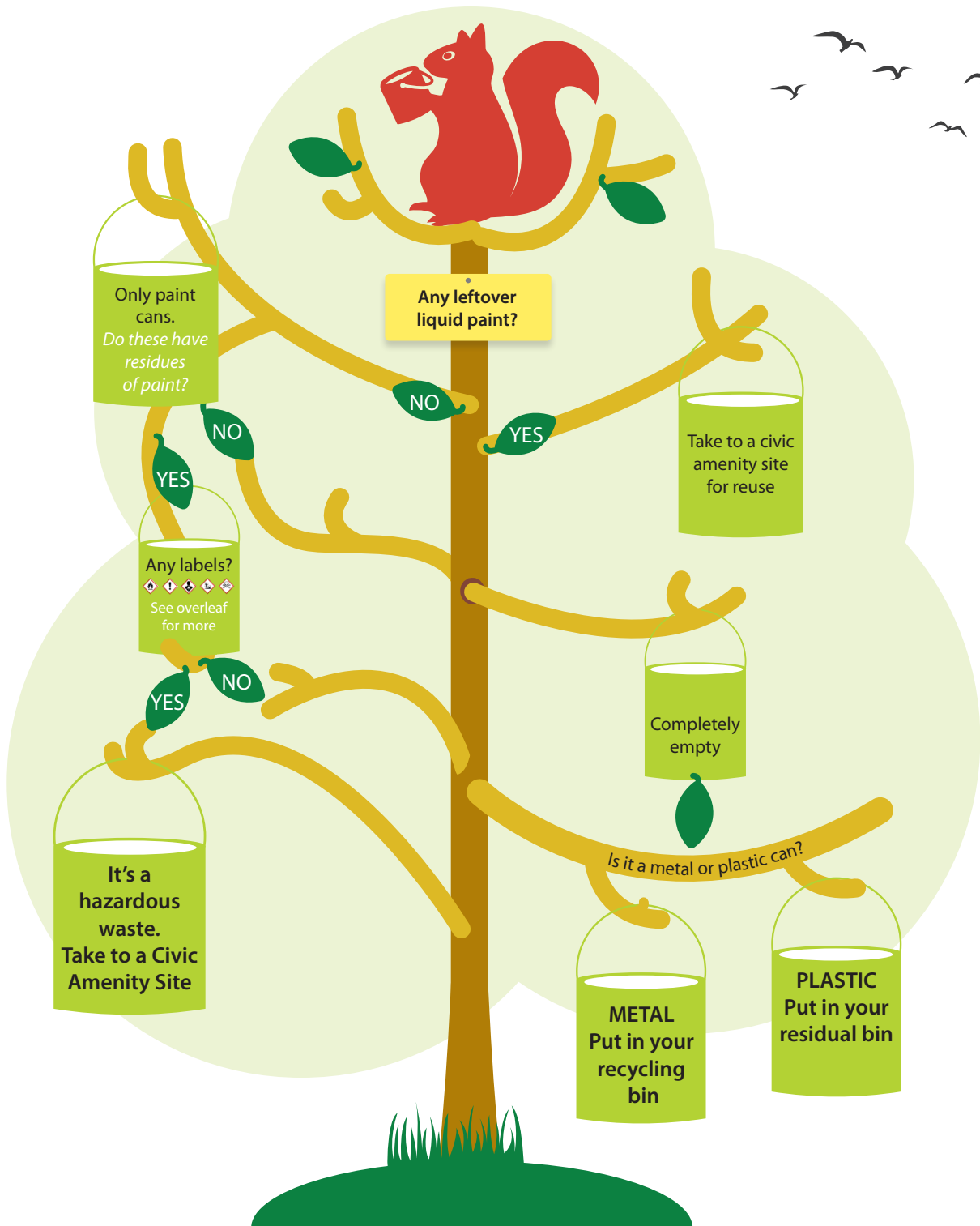


# Are you a Paint Squirrel?

You've finished that paint job, what to do with any left-over paint and those empty tins? Have a look at our waste paint decision tree for some help and avoid having a hoard of paint tins you don't need!



# Are you ready for the next paint job...?



Use a paint ready reckoner to buy just the right amount, saving your cash for those finishing touches.

Paint Calculators - Click bucket to go to website.



Crown Paints



Dulux Paint



DIY.com



www.colortrend.ie



Weathershield



Valspar Paint



Johnstones Paint



McConnells Paints



## Please note:

Each calculator has comments as to its accuracy.

For more info, go to

[www.southernwasteregion.ie](http://www.southernwasteregion.ie)

## SOME PAINT IS HAZARDOUS WASTE

If your paint tins have any of these labels - then your paint is going to be a hazardous waste. If such labelled tins are completely empty and dry they could be placed in your recycling bin. The types of paints that will have these labels will be mainly oil-based paint & thinners, and certain speciality paints and coatings.

Sometimes, instead of labels, there is just text on paint tins. Again, any paint with any of the following text is going to be a hazardous waste:

- Flammable liquid and vapour
- Harmful to aquatic organisms, may cause long term adverse effects in the aquatic environment
- Harmful to aquatic life with long lasting effects

